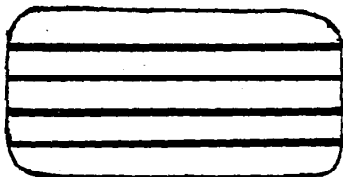


COCKPIT HATCH COVERS & COCKPIT GRATING

I would like to describe how I replaced my aging hatch-covers simply and cheaply. I obtained a 3'x5' piece of high-grade sheet mahogany marine plywood (3/4") from Johnson's Lumber in Annapolis, Md. I used the old hatchcovers for patterns and sawed, planed, sanded and oiled for just a few hours with the resulting covers just a beautiful sight and of furniture quality - all for \$26.00. - Mike Johnson

My teak veneer plywood cockpit seats started to come apart. I covered them with white Formica and then added teak wood strips. It makes the boat look quite different.



- Jim Ranti

On the locker (cockpit) lids. Teak arrived, planed and nicely milled as specified, 5/8" x 8" width. Two boards 70", one board 60". Some one inch thick by 1 1/2" wide pieces for cleats. The port and starboard lids were then made by carefully joining two pieces, using cut nails as dowels, using epoxy for the joint, and then using epoxy to glue three cleats across joints after setting carefully screwing using 4 screws per cleat, 1/2 inch into the seat. Using the old seats as templates, and duplicating very carefully the measurements for piano hinges, catches, installed them, with a few minor adjustments, they fit nicely. Used a thin filler, two coats, and will now varnish. The joint of the two boards, as expected, have separated slightly, which will be no problem to work a filler into when they are varnished. Having paid \$112 to Condon Lumber of White Plains for the wood, it was sent freight collect \$19.50 to Cambridge. However, the old plywood covers were shot, never were right from the start, and I would not go to sea in a VEGA with this installation, not near strong enough for the ocean. I did not bother about the inlaid gasket. I'll take some appropriate thin cushion tape and run it around at some point. Any questions please call. It took quite careful carpentry to make them up, but they came out fine. Big trick, joining the 8" boards for a smooth fit, and careful measurements to duplicate originals. - Robert Shepard

On my locker lids, the edge where the hinge is, the screws have split the wood and the hinges are loose. I chopped off the split part and built it up with Marinetex. Also the gaskets have not been fitting too well. I bought cellular vinyl tape that is 1/2 inch by 7/16ths and cut it in half. - Sid Rosen

When we bought our boat, the starboard cockpit hatch cover had started to delaminate. The previous owner had used duct tape on the underside which served to keep out water but did not provide any support, so very shortly we had two delaminations and a fracture. Our first attempt with the problem was to fiberglass the cover, but eventually the fiberglass started to delaminate and we had to remove it and sand down to the wood. For a proper fix:

1. Remove hardware and bracing boards.
2. Finish delaminating all seams, clean off old gunk with a chisel, and sand the seams down to the bare wood.
3. Assemble two large C-clamps, borrow or rent a set of "bar" clamps, buy several tubes of epoxy (not quick setting), and, most important of all, something called "resin thick" (a fine crystalline powder).
4. For one seam at a time, mix epoxy with resin thick until it is the consistency of peanut butter, spread on each side of the seam, clamp together, and scrape off excess epoxy.
5. When cover is completely glued and dry, sand like heck and then oil the wood. Reinstall bracing boards. We put some extra reinforcing braces on the underside.

- Hank and Sheila Dowst

I followed Jack Berle's lead in covering my cockpit hatch covers with formica (sheet obtainable from lumber yard, cemented down with waterproof contact glue according to directions on the can; patterns and colors available to suit every taste). So far, so good after about seven years.

- Art Levin

We replaced the teak cockpit hatch covers with new ones from Vegetill-behor -- better than the original. We were very pleased with price and quality.

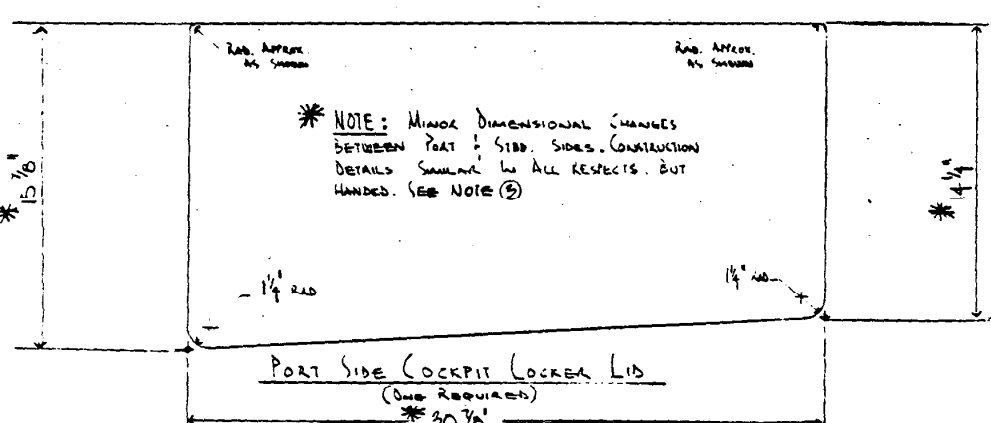
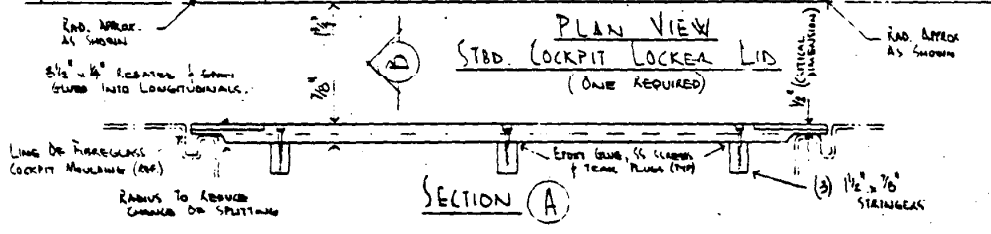
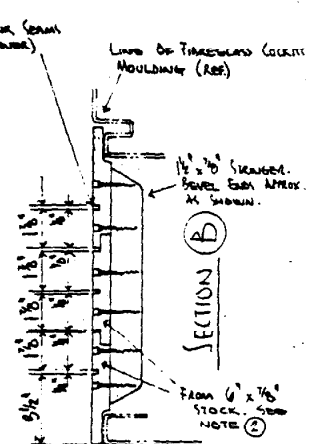
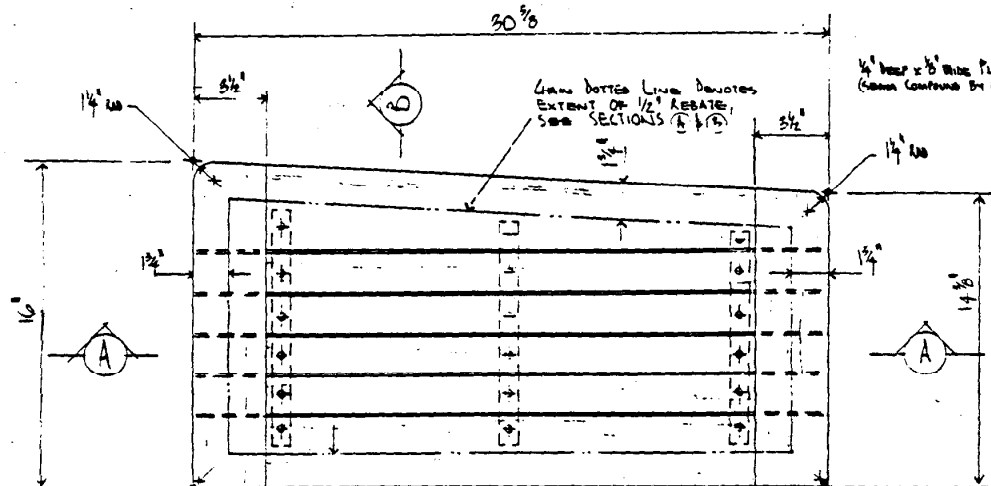
- Noel & Maureen Bearce

I manufactured new cockpit hatch covers out of 3/4" teak, using the old covers as patterns. I lap-jointed two 9" widths together and attached cross braces underneath with screws and epoxy. It really spruced up the appearance of Funseeker.

- Willis Alexander

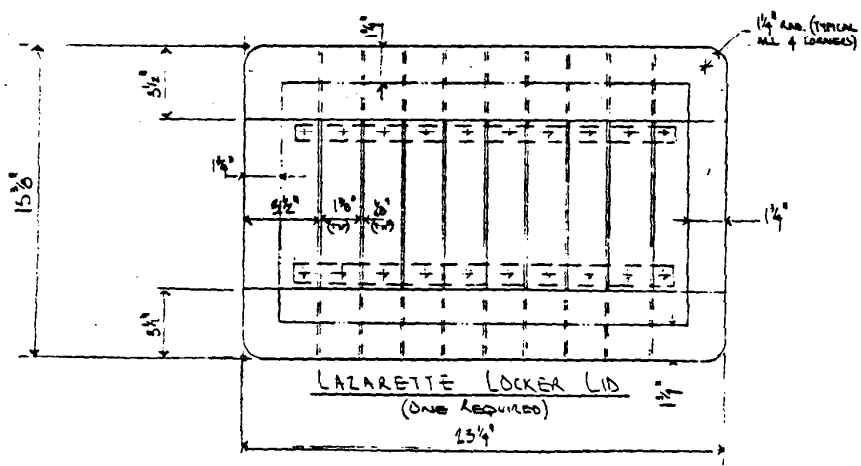
The cockpit sole cracked and I replaced it with 3/4" marine plywood with teak veneer. With the 3/4," I needed longer screws. Rather than try to find metric screws, I retapped the existing threads (directly with no drilling) to $\frac{1}{4}$ " - 20 and was able to use stock screws (flat-head, with cup washers) from the supply house. It really looks nice.

- Harold Cohon



* NOTE: MINOR DIMENSIONAL CHANGES BETWEEN PORT & STBD. SIDES. CONSTRUCTION DETAILS SIMILAR IN ALL RESPECTS, BUT HANDED. (SEE NOTE 2)

- NOTES:**
1. ALL TRUSS CONSTRUCTION WITH RESORGINAL OR EPOXY GLEUE JOINTS.
 2. 3 1/2" WIDE PERIMETER, 1 7/8" PLANK EFFECT 1/2" PLANK SEAMS MAY BE DIMENSIONALLY MODIFIED TO SUIT AVAILABLE STOCK.
 3. PORT SIDE COCKPIT LOCKER LID IS "MIRROR IMAGE" OF STBD SIDE LID.
 4. CONSTRUCTION OF LAZARETTE LOCKER LID IS SIMILAR IN EVERY WAY TO COCKPIT LOCKER LIDS.
 5. FINISH REQUIRED - SANDED & READY FOR SEAM COMPOUND & OIL.



"LORNA DOONE"
27' Aux. MH SLOOP
COCKPIT HATCH LIDS

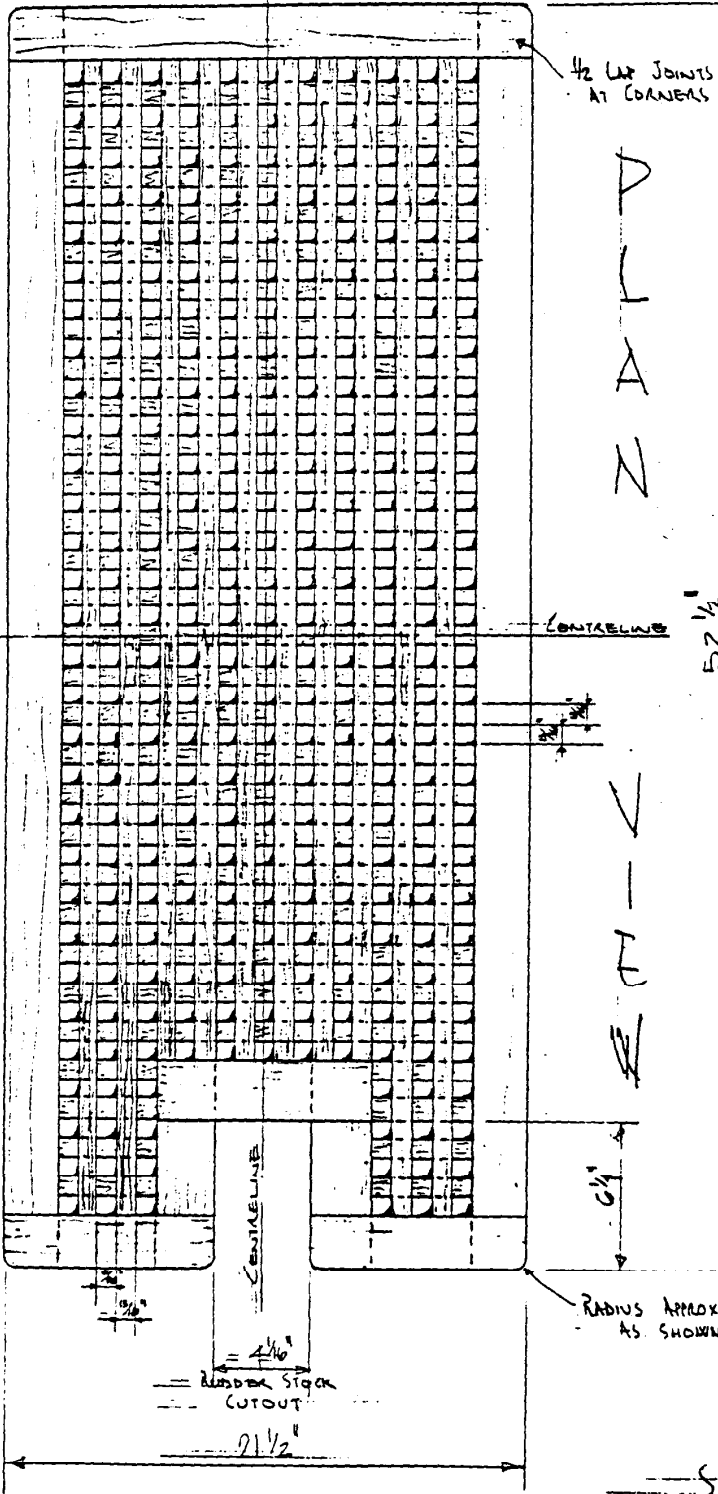
SCALE 3" TO 1'-0"

A.G. SKIDMORE
610 LIBRA PLACE
RR #2, VICTORIA, B.C.

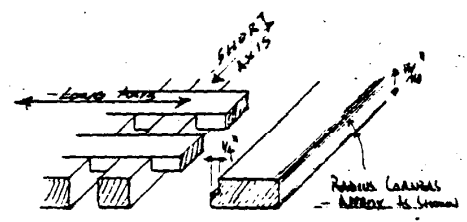
TEL. 386-5833 (OFFICE)
478-5071 (RES.)

10th Nov. 83

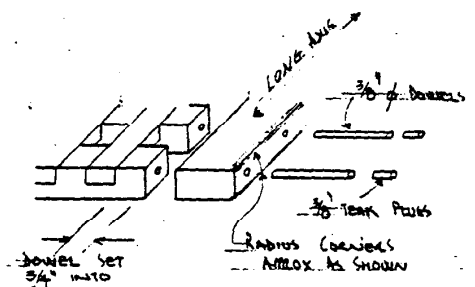
'LORNA DOONE' 27' AUX CAB
LOCKER GRATING



A.G. SKIDMORE
610 - LIBRA PLACE
RR #2, VICTORIA, B.C.
40X 5X2
TELEPHONE 478-3871 (RES)
386-3833 (OFFICE)



SHORT AXIS (21 1/2")
EDGE DETAIL



LONG AXIS (52 1/2")
EDGE DETAIL

NOTES:

- ① MATERIAL — TEAK, EDGE — GRAIN IF POSSIBLE.
- ② ALL JOINTS GLUED, EPOXY OR RESORCINAL.
- ③ FINISH — SANDED & READY FOR OILING.

SCALE: 3" = 1'-0"