

Albin Vega "Griffin"

Repairs and Upgrades // Likes and Dislikes // Photos



GRIFFIN

Albin Vega #1690

LOA 27-01 **LWL** 23-00 **Beam** 8-00 **Draft** 3-10 **Disc** 5070# (2017ballast)

- Sails:** Genoa (A), Main 1 (B+), Main 2 (B), Gennaker (A w/North sock)
Nav: Sunnto Compass, GPS, VHF, Fatho, Searchlight, new nav lights, Auto Pilot, Charts and Pubs, Bearing Compass, Clock & Barometer
Safety: Current fire extinguishers (3), first aide, flares, jackets, jacklines, Smoke and CO alarms, spare manual bilge pump, one main manual, and one electric bilge pump.
Deck: Extra line, fenders, spare anchor and road, main road, roller

ANNUAL IMPROVEMENTS & REPAIRS:

2010

- New batteries
- Cleaned and painted out aft compartment/lazarette
- **Removed inner liner throughout and replaced**
- Removed and repaired engine heat exchanger
- Initial haul-out after purchase ... renewed bottom-paint and zincs
- Cleaned and revitalized gel-coat on hull and topsides
- Painted LPU nonskid on cabin top and main deck

2011

- Removed and cleaned freshwater tank
- Cleaned and painted out forward voids
- Removed and re-varnished forepeak and main cabin woodwork
- **Provided new fresh water hose, spigots and water filter**
- **New Jabsco head**
- New clock and barometer
- New oil lamp in main cabin
- Cleaned and painted galley and main cabin voids
- **New upholstery for focsle and main cabin bunks ... 4" foam**
- **Completely new 12v electrical system with Blue Sea Systems board**
- New battery switch
- **New interior lighting** throughout
- New navigation lights and mast light/deck light
- **Provided new mainsail cover and genoa cover**
- New sound and fireproofing for engine compartment
- Upgraded cockpit locker dividers and bases to 3/8"
- New running rigging for main and jib
- New ventilation ducting and stainless deck fittings throughout
- New curtains
- New BBQ and cooking gear

2012

- **New dodger on 1" stainless frame with supports**
- Haulout ... additional sanding and bottomcoating
- Renewed cutlass bearing ... spare bearing provided
- **Replace all below water line through-hull valves with Perko seacocks**
- New hoses and plugs
- **Installed new holding tank system with vent filter and sanitary hoses**
- Repacked stern gland
- Dropped mast for inspection and new gennaker halyard
- **New fuel lines**
- **Cleaned fuel tank**

2012 (con't)

- **New bronze sea strainer and salt water lines**
- Waxed and continued maintenance on hull
- Battery hold-downs
- Provided new search light and safety equipment
- Provided stainless bow roller for anchor (Windline BRM4 ... to be installed)
- New Vetus stainless vents
- New solar power vent for head
- Rebuild Force 10 kerosene cabin heater and tank provided
- New electric bilge pump and switching
- Rebuilt Whale gusher pump ... new hoses and check valve
- New mainsheet traveler and line
- New handrails
- New teak accessories for interior stowage (galley and nav)
- Handheld GPS

2013

- New sheet and cockpit organizer bags
- **Changed to Lewmar 25 2speed winches (old winches retained)**
- New backstay adjuster. Rig
- Jacklines installed
- **New Iroko cockpit locker hatch tops and trim**
- **New Smart-Plug system and installed 110v shore-power board and GFIs**
- New teak inserts for cleats (turned teak dowels)
- New Cetol on exterior teak

2014

- **Engine oil analysis by NC Machinery ... no problems reported – report provided with logs.**
- Engine fluids and filters changed
- New winch covers
- Whale pressure Fresh Water pump
- **Haulout scheduled to:**
 - **Professionally do the bottom – two coats of antifouling**
 - **Professionally attend to rudder patch**
 - **Professionally attend to gel coat craze in mast shoe**
 - **Install iroko/sapele mast beam supports (Vega upgrade)**
 - **Change out propeller**
 - **Drop mast ... inspect and replace**

Note: Boat provided with all engine, deck, rigging, safety, & galley inventory.

DISLIKES (or nothing's perfect yet) :

- **Spinnaker pole padeye** - Frozen in its track ... but I don't use it
- **Furler drum cover corroded** - **NOTE: Replaced with stainless spring loaded fairlead block and removed drum cover.**
- **Rudder patch** - At purchase, evidence of a patch on the portside of the rudder about ½ way up ... area of about 3" diameter possible de-lamination ... no evidence of spreading ... rudder is foam filled anyway.
- **Propeller older** - Prop is older but in OK shape ... possible plan to replace in subsequent haul-out.
- **Kerosene heater** is "cranky" ... disconnected from tank ... might be fixed ... have Force 10 kerosene heater (rebuilt) as a spare provided w/tank
- **Windows** ... one could look at replacing the windows in the future ... I have the contacts to acquire ... not a major budget issue. No problems currently.

INVENTORY AND OUTFITTING:

General

- ◆ Avon and oars
- ◆ Rail mount LPG BBQ and tank
- ◆ Full emergency gear ... fire extinguishers current and tagged
- ◆ Galley cooking gear (pots, pans, rice cooker, utensils, etc.)
- ◆ Pillows, cushions and "fast dry" towels
- ◆ **Spare foam for possible centerline "filler" makes main cabin bunks into a king sized bed!!**
- ◆ Spare engine and electrical parts (filters, belts, impellers, bearing, etc)
- ◆ Cleaning gear and spare oil, coolant, etc.
- ◆ Small interior cooler/ice box ... and one medium (cockpit) storage cooler
- ◆ Cockpit shade
- ◆ Spare line
- ◆ Cockpit cushions

Focsle & Forward Lockers

- Vacuum cleaner
- Small 110v heater
- Winter cabin heater 110v
- Table and stainless legs
- Linen and gear for the head
- Small 110v fan

INVENTORY AND OUTFITTING (con't)

Main Cabin

Port Settee (top ledge)

- Engine crank
- Stern gland wrench
- First aide kit (medium size)
- 110v ceramic heater

Engine Spares (Behind aft seat back)

- 2 new Fleet Guard fuel filters
- 2 new impellers
- 1 new ignition relay
- 1 bottle of BioBore
- 1 complete set of "O" rings and seals for the heat exchanger
- 2 pencil zincs
- 1 new stern bearing
- 1 new ignition jumper
- 1 new Volvo fuel filter for engine mount
- 2 new Racor filters
- 1 new Volvo oil filter
- 1 12v fan
- Misc spare 9 v batteries
- Misc spare cooling hose
- 2 new engine belts
- 1 110v power strip
- 1 small roll of hatch gasket

Port Bunk (underneath)

- Hardware Box with misc stainless screws/bolts/nuts/etc.
- Electrical Box with misc fittings, wire, lugs, etc.
- Deck Gear Box with misc. shackles, fittings, etc.
- Plumbing Box with misc fittings, parts, etc.
- Oil Changing kit ... oil change pump and coolant "syringe"
- Spill Kit ... absorbant, engine pads, etc.

Starboard Settee (top ledge)

- 12v plug in search light
- Flag and pig stick
- Boxes of spare stainless bolts & nuts (to upgrade bulkheads)
- Spare line, sail gaskets, etc.
- Auto pilot storage

Deck and Emergency Spares (Behind aft seat back)

- Brass horn
- 1 roll of small braid
- Air horn and spare bottles
- 1 new stern light
- Winch grease
-

INVENTORY AND OUTFITTING (Con't)

Main Cabin

Deck and Emergency Spares (con't)

- Furler lead fitting
- 4 stainless pelican hooks for lifelines
- 2 rolls of gasket material
- 12 Anchor Light (portable ... hoist)
- 1 set of jacklines and tethers
- 1 new winch handle pocket
- 1 life ring bracket
- 1 Flare Kit (expires June 2014)
- 2 sets of expended red flares for misc. use
- 1 heaving line

Starboardside Galley & Storage

- Plates and glasses
- Dry stores and bottles
- Mugs
- Cleaning Gear
- Small cooler

Portside Galley & Storage

- Dry storage and bins for condiments/misc cooking gear
- Cooking and eating utensils
- New Origo 3000 cooker
- Teak spice rack and towels
- Collanders
- Grater
- Cutting boards (2)
- Collapsible storage containers and bins
- 2 small cooking pans with lids
- 1 medium sized pot
- Collapsible salad spinner
- 1 electric hot water maker
- 1 square cooking pan
- 1 toaster (stove top type)
- 1 square griddle
- 1 collapsible drying rack

Port Cockpit Locker

- Avon and gear (pump, boards, and outboard rack)
- BBQ
- Covers
- Shore power cord

INVENTORY AND OUTFITTING (Con't)

Aft Cockpit Locker

- Fenders
- Mooring and general line
- Spare oil/coolant/water in jugs
- Aft anchor road
- Mooring equipement

Starboard Cockpit Locker

- Garbage can
- Medium cooler for general food storage
- 2 2.5gallong diesel fuel jugs
- 2 buckets ... generally filled with misc maintenance and boat "stuff" :)

PHOTOS

2012 HAULOUT IN PORT TOWNSEND



Replaced Cutlass Bearing / Prop Check / Spare Bearings



New Thru Hulls and Sea Valves



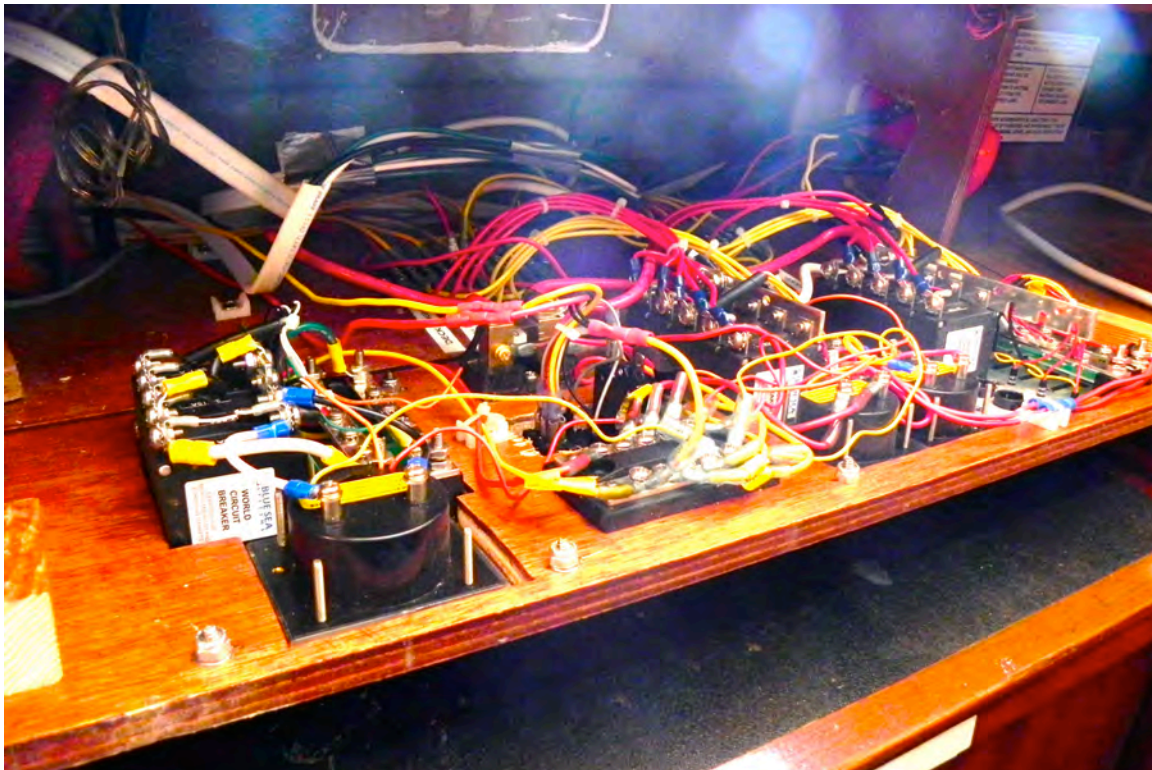
Engine (Front)



Reduction Gear / Shaft - Filters



New Blue Seas electrical boards and Ancor marine wire.



Interior



Interior



Head (New plumbing, valves, tankage, and lines throughout ... vent filter)



Exterior Detail



Port Side / Dodger and Custom Teak Visor



Starboard Side



Deck and Hull Moisture Tested



Sailing off Port Ludlow



Sail Trim



Sailing off Alki



At the Dock in Coupeville



At the dock Blake Island

